















**APPROVED
FOR TRANSPORT UNDER
CUSTOMS SEAL**

ROK / 185 - KR / 90

TYPE: HO-1AA-951 MANUFACTURER'S NUMBER: HDZ91-424297

GENSTAR

GENSTAR CONTAINER CORPORATION
SAN FRANCISCO, CALIFORNIA, U.S.A.

TIMBER COMPONENT TREATMENT IM / CELCURE-A / 91

CSC SAFETY APPROVAL

F / BC / 1001 / 90

DATE MANUFACTURED: 175 7 1991
IDENTIFICATION NO. GSTU 49262415
MAXIMUM GROSS WEIGHT: 30480KGS / 67200LBS
ALLOW. STACK. WT. FOR 1.8G: 19200KGS / 423287LBS
RACKING TEST LOAD VALUE: 36240KGS / 33600LBS

ACEP
USA
1985
0023

















Lloyd

HI CU 437 885 0

MAX. GROSS

30720 kg
67200 lbs

TARE

3810 kg
8400 lbs

MAX. PAYLOAD

26670 kg
58800 lbs

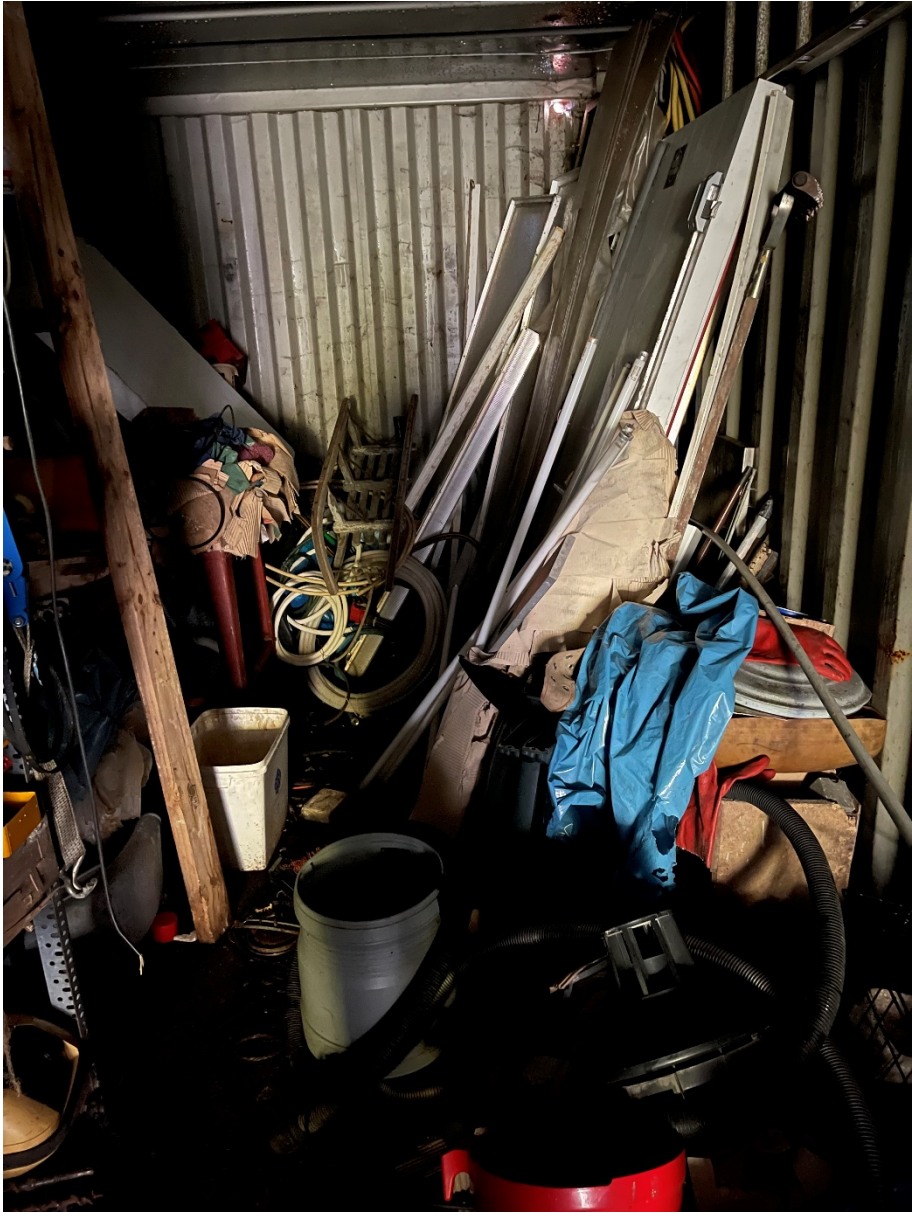
CUBE

68.0 m³
2403 cuft











23

MGW: 24,000 kgs
TARE: 2,270 kgs
NET: 21,730 kgs

52,910 lbs
5,010 lbs
47,900 lbs

























SCI Line
The Shipping Corporation of India Ltd

SIU 401202 4
42G1

| | |
|------------|-------------|
| MAX. GROSS | 30,480 KGS |
| | 67,200 LBS |
| TARE WGT | 3,700 KGS |
| | 8,151 LBS |
| MAX. CARGO | 26,780 KGS |
| | 59,043 LBS |
| CU. CAP | 67.60 CU.M. |
| | 2,387 CUFT |

Palmer
Laurie



















MGW.
TARE.
NET.
CU.CAP.

30480 KG
67200 LBS
4050
8930
26430 KG
58270 LBS
67.3 CU.MT.
2377 CU.FT.







