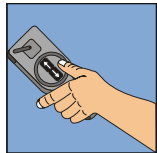


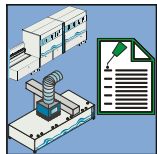
4.1.1 Einschalten der Maschine  
PC 22

9-082-41-1091



4.1.4 Einfahrhilfe  
DL

9-082-41-4070



4.3.1 schulter Maschinendatenerfassung  
BASIC

9-082-43-1003



4.7.2 PC 22  
Startmenü

9-082-47-2011



4.7.2 woodCommander  
Programmverwaltung

9-082-47-2041



4.7.2 woodCommander  
Touch Bedienung

9-082-47-2050



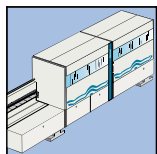
4.7.7 PC 22  
Bedienoberfläche

9-082-47-7410



4.7.7 PC 22  
Bedienoberfläche für Durchlaufmaschinen

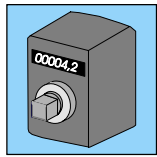
9-082-47-7431



5.1.1 Grundmaschine  
Optimat KAL/R 210, 310

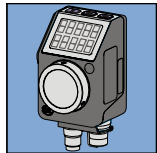
9-082-51-1641





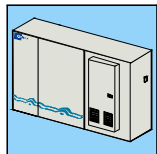
5.1.7 Verstelleinrichtung  
Digitalzähler

9-082-51-7010



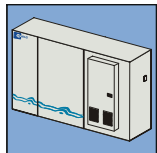
5.7.1 Verstelleinrichtung  
Elektronische Positionsanzeige AP04

9-082-51-7020



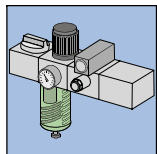
5.2.1 Schaltschrank

9-082-52-1030



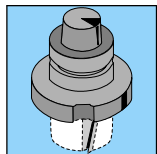
5.2.1 Filterlüfter

9-082-52-1110



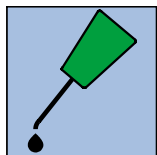
5.3.1 Druckluftwartungseinheit  
AS 3 / AS 5 Standard

9-082-53-1121



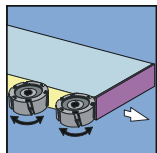
5.5.4 Werkzeugaufnahme  
HSK 25 R

9-082-55-4070



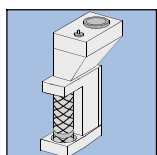
5.5.5 EG Sicherheitsdatenblatt  
HOMAG-Spezialfett HT II

9-082-55-5200



6.3.5 Fügefräsaggregat  
S2 Basic

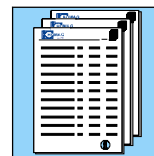
9-082-63-5682



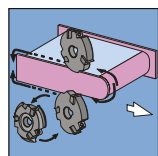
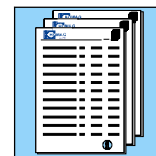
6.4.5 Verleimaggregat PU 65  
QA

9-082-64-5173



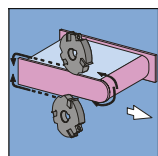


	6.4.5	Verleimteil A6 / A12 / A20 / A25 powerControl	9-082-64-5661
	6.4.5	Verleimaggregat Quick Melt 65 BASIC	9-082-64-5751
	6.4.5	Kantenanleimer aus Massivholz Anforderungen	9-082-64-5891
	6.4.9	Sprühaggregat	9-082-64-9032
	6.6.1	Kappaggregat HL 84	9-082-66-1242
	6.6.2	Vorfräsaggregat	9-082-66-2013
	6.6.2	Formfräsaggregat FK11 I-Wechselkopf verstellbar	9-082-66-2420
	6.6.2	Vorfräsaggregat Option: Verstelleinrichtung pneumatisch	9-082-66-2505
	6.6.2	Multifräsaggregat MF20 manuell verstellbar	9-082-66-2620



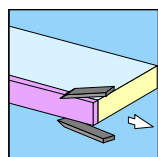
6.6.2 Formfräsaggregat FK 11 L500  
mit I-System

9-082-66-2641



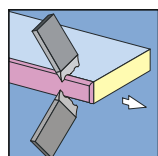
6.6.2 Formfräsaggregat Wechselkopf

9-082-66-2710



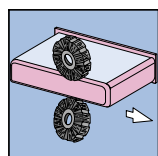
6.6.4 Nachputzeinrichtung für Leimfuge

9-082-66-4090



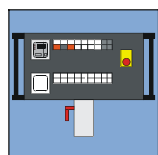
6.6.4 Multi-Nachputzeinrichtung MN 21  
automatisch verstellbar

9-082-66-4141



6.6.8 Schwabbelaggregat  
oben / unten

9-082-66-8023



7.0.0 Bediensymbole  
für Durchlaufmaschinen

9-082-70-0911